

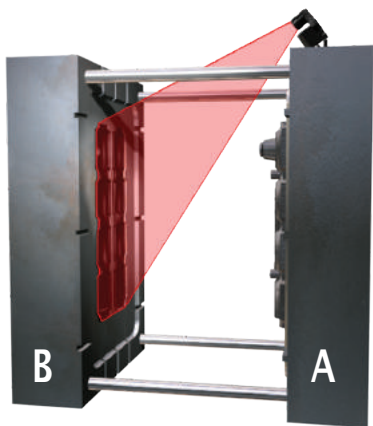
Your Mold Protection Experts

# MOLDWATCHER

Prevents traumatic mold crashes

that cost a fortune and possibly customers

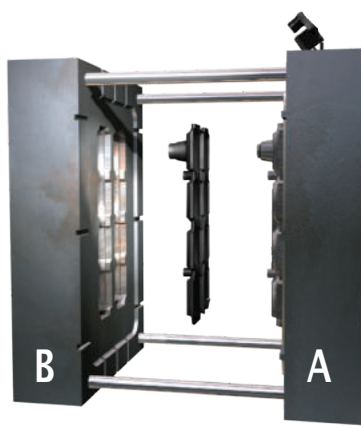
## How Vision Mold Protection Works



### 1. The Mold Opens

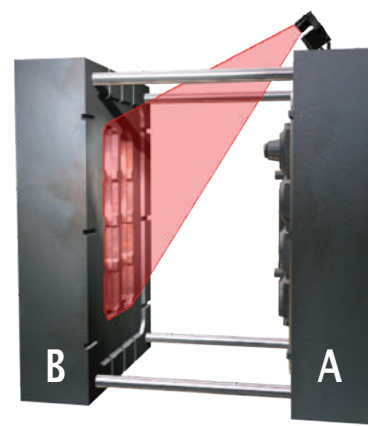
#### Before Ejector Image is Taken

Presence of all parts on "B" side (moving) verifies the absence of parts from "A" side. Part quality and insert placement can also be verified. If good, ejectors are permitted to proceed.



### 2. Ejection is Enabled

If all parts are not present, the press is stopped. If bad parts are detected, the response is programmable by stopping the press or re-routing the bad product by reversing a conveyor, etc. If all parts are present and good, ejection is allowed.



### 3. Ejection is Complete

#### After Ejector Image is Taken

Absence of all parts on "B" is verified. This can also verify slides, ejector pins, cores, etc. If good, the mould is permitted to close for the next cycle. If problems are detected, the press is stopped.

## MoldWatcher Features & Benefits:

- ✓ Setup on new molds in minutes
- ✓ Customizable Toolbar in user interface
- ✓ Archives setup files for easy job retrieval
- ✓ Touchscreen for easy operator interface
- ✓ Cameras up to 5 megapixels
- ✓ Multiple camera support
- ✓ Single touch "Teach" updates the system
- ✓ Multiple inspections per cycle ensures protection
- ✓ Communicates with all injection machines
- ✓ Flexible I/O including Euromap 12/67 quick connect
- ✓ Patented Near-IR lighting
- ✓ Works on horizontal & vertical molding machines

Prevent problems before they occur

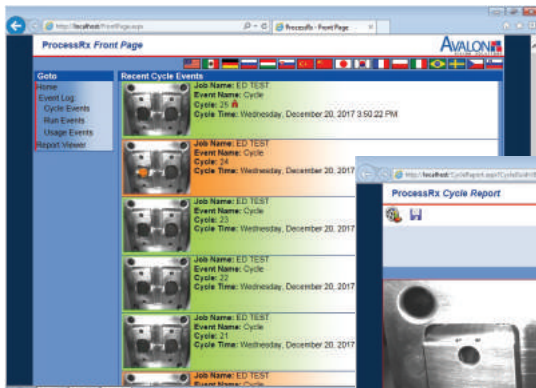
[www.avalonvision.com](http://www.avalonvision.com)

When knowing the facts is important

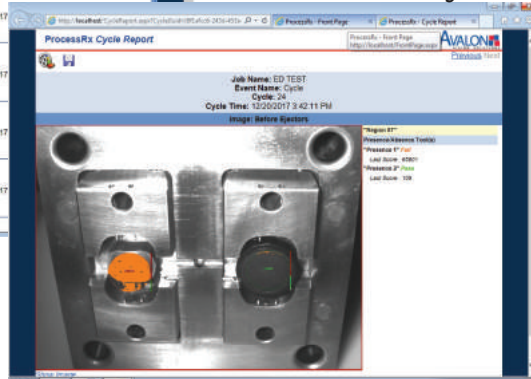
# ProcessRx

will let you see what happened

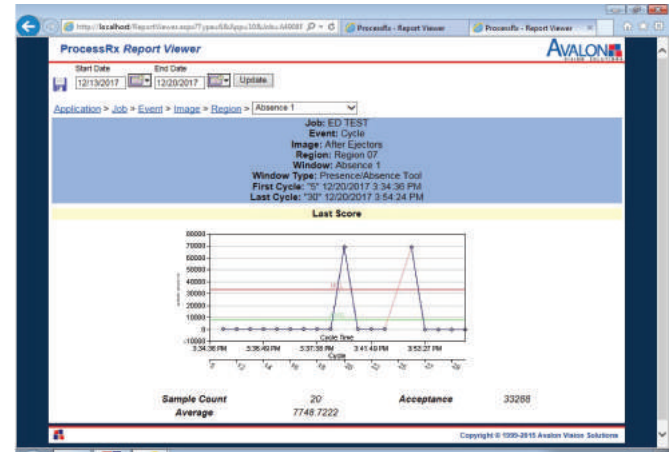
Cycle Events



Failed Image Data



Detailed Reports



## Cycle Events

- Logs measurement data specific to an inspection
- Verifies successful processes with images
- Playback image sequences

## Failed Image Data

- Actual image
- Inspection criteria
- Measurement results

## Run State Events

- Reveals and reports the history of vision Run operations

## Usage Events

- Reveals the history of file loading, saving, and changing
- Reports if inspection data was cleared from the database
- Unveils the need for additional training

## Report Output Options

- Bar graphs, Scatter graphs, X Y Plot
- UCL & LCL, Averages
- Frequency of attributes
- Saving to PDF files, prints with a single click

## Job Tree

- Allows the user to drill down to the right level
- Precise inspection reporting resolves process uncertainty

## Date Range

- Date, Time, and Cycle Counts narrow the focus

## Context Sensitive Display

- Each inspection tool has context sensitive statistical reports
- Presence Absence Tool Report example plots Cycle Number against Last Score
- Enlightens you if the process is drifting out of control

Your Local Avalon Expert

**Avalon Vision Solutions, LLC**  
422 Thornton Road, Suite 104  
Lithia Springs, GA, USA 30122  
Office: 770.944.8445  
Fax: 770.941.7299  
info@avalonvision.com